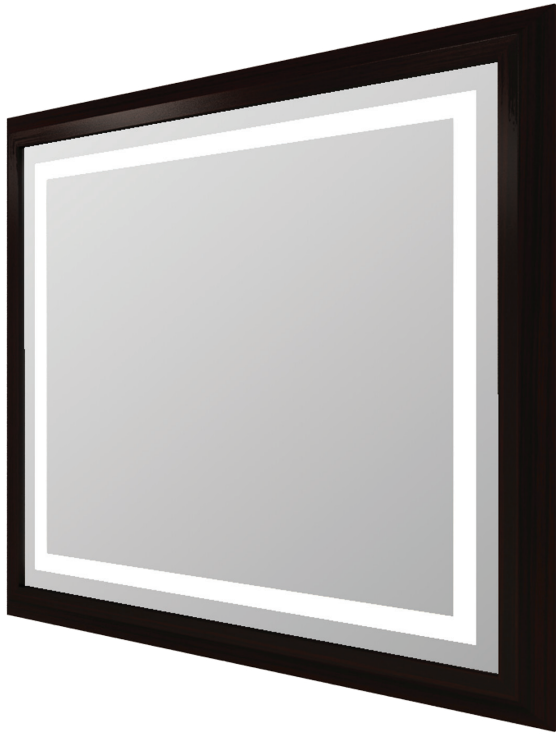


**MOMENTUM™ LIGHTED MIRROR**

The Momentum™ Lighted Mirror remains the most popular lighted mirror design, providing parallel rectangular lighting with a clean modern frame.

**THERE'S ONLY ONE™ ELECTRIC MIRROR®**

Electric Mirror is the global leader in Lighted Mirrors and Mirror TV technology. With unparalleled customer service and amazing innovation, Electric Mirror is the standard of luxury for five-star hotels, upscale commercial projects and designer homes.

**FEATURES**

- E-Life™-8 Years Extended Lamp Replacement Cycle
- Wood Urban Profile Frame
- Natural Light Color
- HardCoat™ Anti-Corrosion Mirror Treatment
- Environmentally Sustainable
- Energy Efficient
- Proudly Made in The USA
- Patented (US 7,853,414)

**LIGHTING**

- Low-Mercury T5HO Warm Fluorescent (US Made)
- CRI 85
- CCT (K) 3000
- Average Lamp Life of 35,000 Hours
- 50,000 Cycle Ballast

**OPTIONS**

- Custom Sizes Available
- Add a TV (See Momentum Lighted Mirror TV)
- Add Keen™ Technology
- Add Vive™ Technology
- Diamond Clear™
- Dimmable
- Defogger
- Night Light
- Glass Shelf
- LED Digital Clock
- LED Lighting
- Wall Glow
- EnergyLite™

**SAFETY**

- Tested to UL/UL-C 1598 Including Section 16.23
- International Certifications
- Safety Backed Mirror

**PROPRIETARY AND CONFIDENTIAL:** The information contained in this specification is the sole property of Electric Mirror®. Any reproduction in part or in whole without written permission from Electric Mirror® is prohibited.

© 2014 ELECTRIC MIRROR®

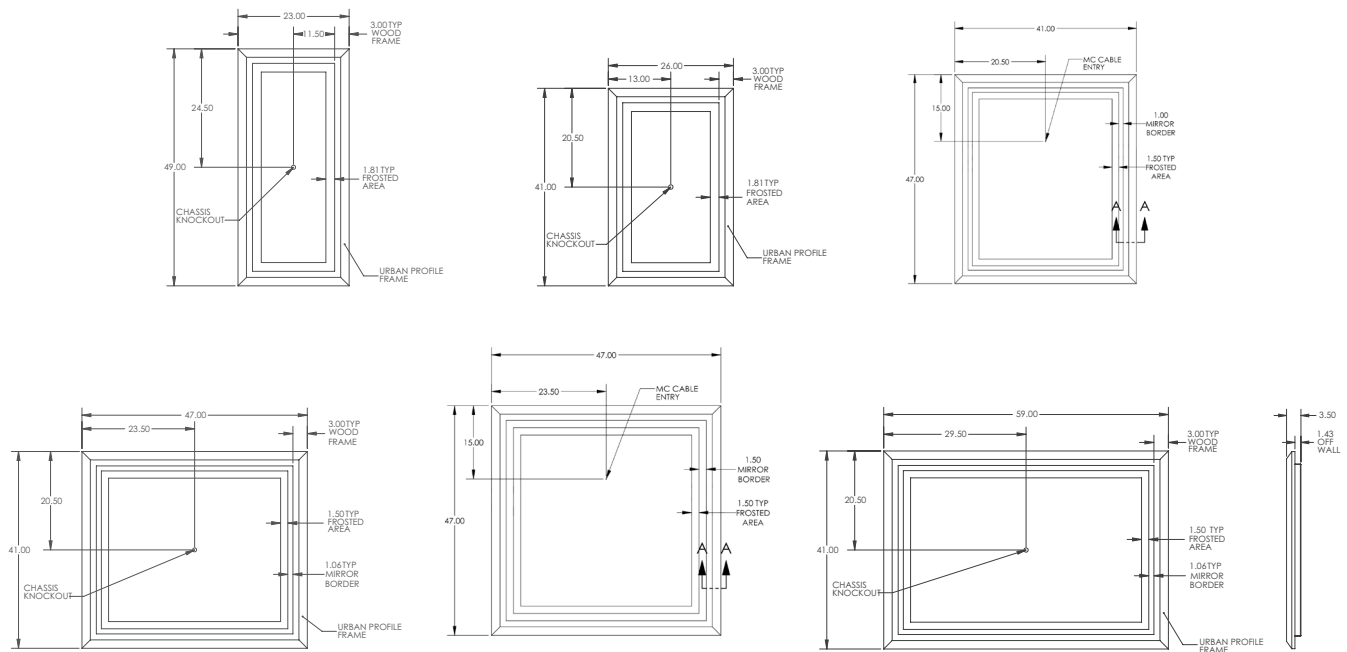
## MOMENTUM™ LIGHTED MIRROR

### SPECIFICATION

- The top of the lighted mirror above the bathroom vanity should be a minimum of 6' 6" above the finished floor.
- Electrical connections made with MC cable brought through the chassis knockout, no electrical box required.
- Electrical power should be controlled by a light switch.
- Fixture should be mounted to wall studs to provide sufficient support. Mounting holes are provided in the chassis.

MODEL NUMBER	DIMENSIONS	POWER REQUIREMENTS	LAMPING
MOM-MUO □ -23.00x49.00	23" W x 49" H x 2.5" D 584mm x 1,245mm x 63.5mm	120 - 277 VAC, 1.5 - .59 Amps, 165W	3 x T5 Circline, 55W
MOM-MUO □ -26.00x41.00	26" W x 41" H x 2.5" D 660mm x 1,041mm x 63.5mm	120 - 277 VAC, 1.0 - .40 Amps, 110W	2 x T5 Circline, 55W
MOM-MUO □ -41.00x47.00	41" W x 47" H x 3.5" D 1,041mm x 1,194mm x 89mm	120 - 277 VAC, 1.4 - .56 Amps, 156W	4 x T5HO, 39W
MOM-MUO □ -47.00x41.00	47" W x 41" H x 3.5" D 1,194mm x 1,041mm x 89mm	120 - 277 VAC, 1.3 - .56 Amps, 156W	4 x T5HO, 39W
MOM-MUO □ -47.00x47.00	47" W x 47" H x 3.5" D 1,194mm x 1,194mm x 89mm	120 - 277 VAC, 1.3 - .56 Amps, 156W	4 x T5HO, 39W
MOM-MUO □ -59.00x41.00	59" W x 41" H x 3.5" D 1,499mm x 1,041mm x 89mm	120 - 277 VAC, 1.69 - .67 Amps, 186W	4 x T5HO, 54W/39W

□ - Indicates finish selection, see frame specification for details



**PROPRIETARY AND CONFIDENTIAL:** The information contained in this specification is the sole property of Electric Mirror®. Any reproduction in part or in whole without written permission from Electric Mirror® is prohibited.

© 2014 ELECTRIC MIRROR®